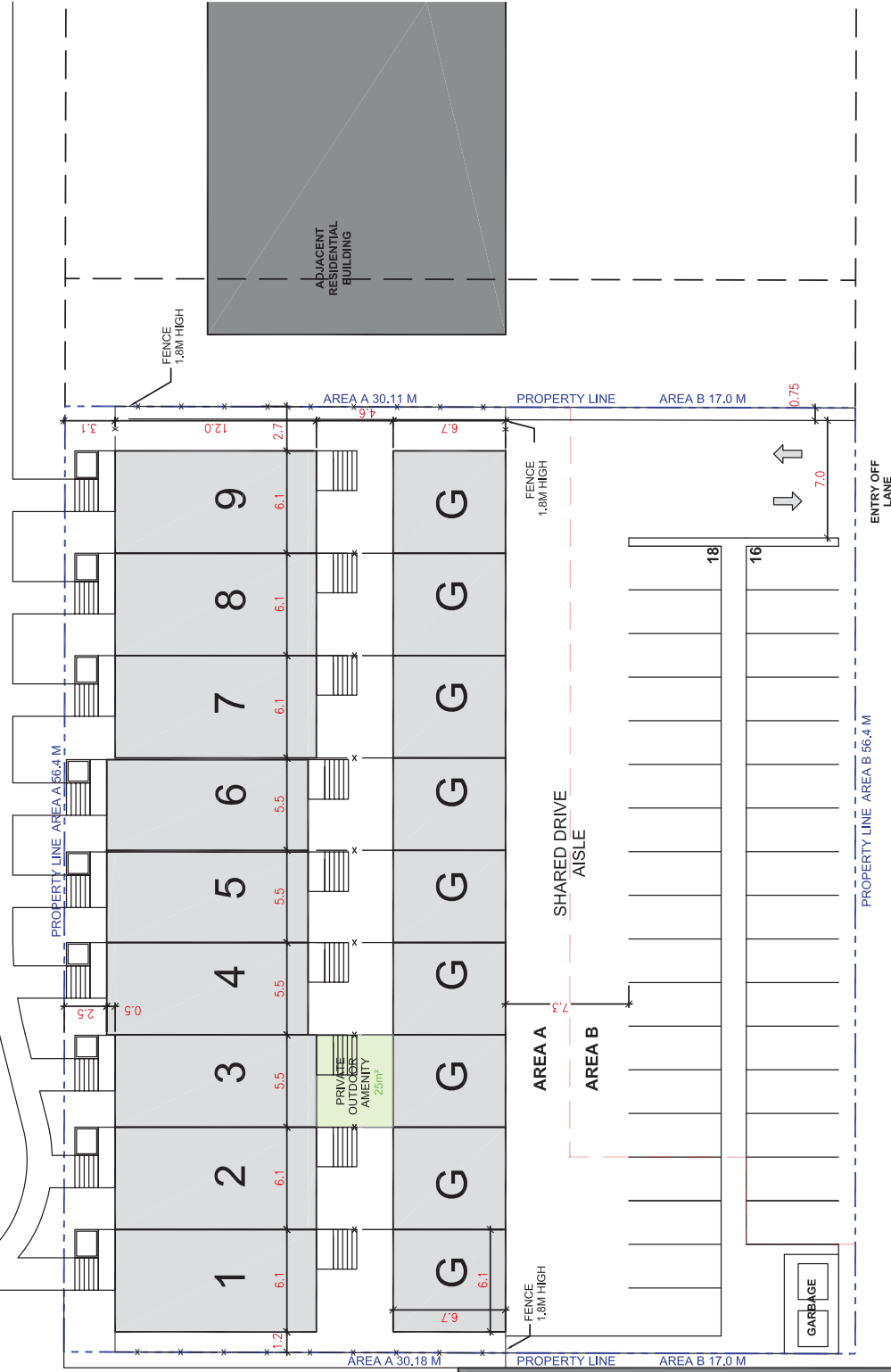


150 ST.



NORTH

SK1
12/10/06
16087

12328 104 Avenue
Edmonton, Alberta T5N 0V9
Tel: 780.462.1167
Fax: 780.462.1169
insee.ca

HODGSON
SCHILF
EVANS
ARCHITECTS INC.



APPENDIX 1 - SITE PLAN
EDMONTON, ALBERTA

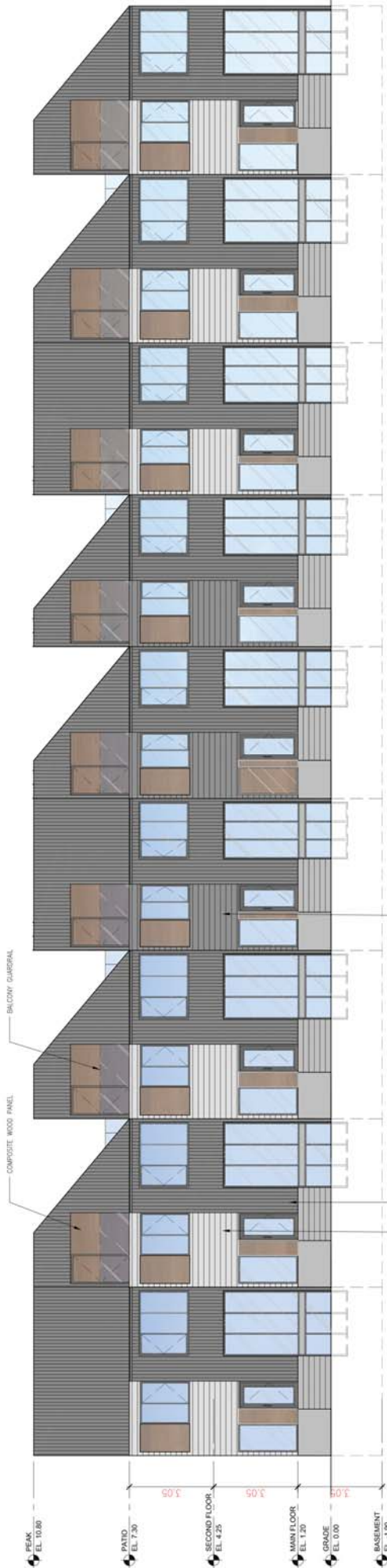
JASPER PARK



ADJACENT
COMMERCIAL
BUILDING



ADJACENT
COMMERCIAL
BUILDING



WEST ELEVATION

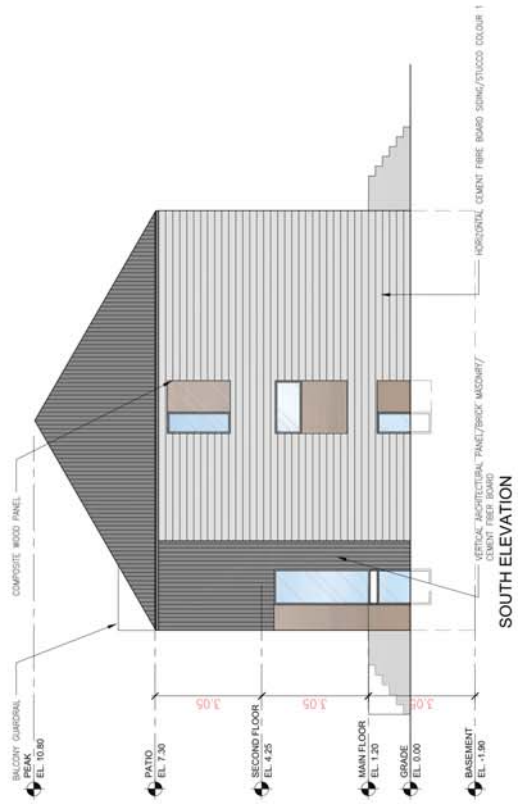


EAST ELEVATION

<p>SK4 12/08/22 16087</p> <p>12325 104 Avenue Edmonton, Alberta T6N 0V3 Tel: 780-482 1107 Fax: 780-482 1105 hseas.ca</p>	<p>HODGSON SCHILF EVANS ARCHITECTS INC.</p>	<p>JASPER PARK</p>
<p>APPENDIX II - BUILDING ELEVATIONS (EAST AND WEST) EDMONTON, ALBERTA</p>		



NORTH ELEVATION



SOUTH ELEVATION

JASPER PARK

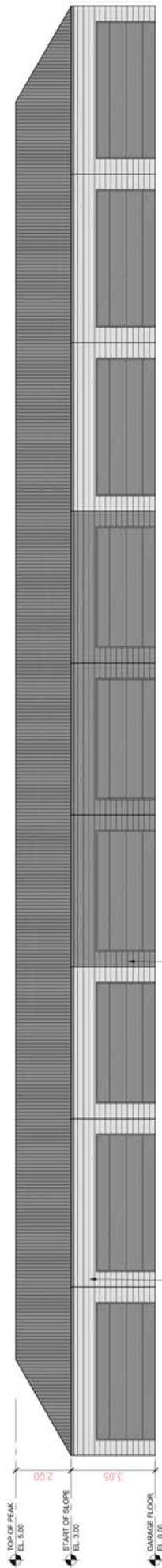
APPENDIX III - BUILDING ELEVATIONS (NORTH AND SOUTH)
EDMONTON, ALBERTA



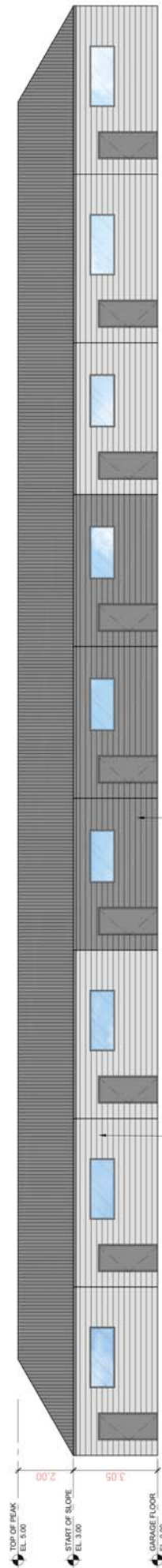
HODGSON
SCHILF
EVANS
ARCHITECTS INC.

12325 104 Avenue
Edmonton, Alberta T6N 0V0
Tel: 780.482.1107
Fax: 780.482.1105
hseaa.ca

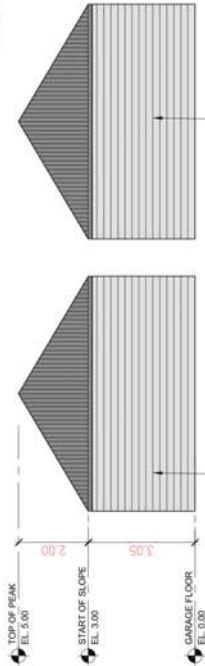
SK5
12/08/22
16087



EAST ELEVATION



WEST ELEVATION



NORTH ELEVATION

SOUTH ELEVATION

<p>SK6 12/08/22 16087</p> <p>12328 104 Avenue Edmonton, Alberta T6N 0V3 Tel: 780.482.1107 Fax: 780.482.1105 hseaa.ca</p>	<p>HODGSON SCHILF EVANS ARCHITECTS INC.</p>	<p>JASPER PARK</p>
<p>APPENDIX IV - GARAGE ELEVATIONS EDMONTON, ALBERTA</p>		



- DECIDUOUS TREE
- CONIFEROUS TREE
- COLUMNAR DECIDUOUS TREE
- DECIDUOUS SHRUBS
- CONIFEROUS SHRUBS
- TALL ORNAMENTAL GRASS
- GRASS AREA
- SHREDDED WOOD MULCH





JASPER PARK

PERSPECTIVE RENDER LOOKING SOUTH EAST
EDMONTON, ALBERTA



**HODGSON
SCHILF
EVANS**
ARCHITECTS INC.

1228 104 AVENUE
Edmonton, Alberta T5N 0V9
Tel: 780.482.1107
Fax: 780.482.1104
hseea.ca

SK7a
12/08/22
16087